

# CROSS WESTCHESTER EXECUTIVE PARK

3 WESTCHESTER PLAZA, ELMSFORD, NY



**1,945 RSF AVAILABLE**

## CONTACT EXCLUSIVE AGENTS:

**WILLIAM ANSON**  
914.968.8500 X 329  
WANSON@RMFRIEDLAND.COM

**KEVIN LANGTRY**  
914.968.8500 X 322  
KLANGTRY@RMFRIEDLAND.COM

**JILLIAN REINER**  
914.968.8500 X 343  
JREINER@RMFRIEDLAND.COM

**RM FRIEDLAND**

COMMERCIAL REAL ESTATE SERVICES

440 Mamaroneck Ave | Harrison, NY 10528 | [rmfriedland.com](http://rmfriedland.com) | 914.968.8500



**1,945 RSF AVAILABLE**

# CROSS WESTCHESTER EXECUTIVE PARK

## 3 WESTCHESTER PLAZA, ELMSFORD, NY

### CURRENT CONFIGURATION

**OFFICE:** 1,206 RSF

**WAREHOUSE:** 739 RSF

### LOADING:

Double door entry

### CEILING HEIGHT:

15' Feet

### MISC:

Sprinklers, gas, and separate meters

### TRANSPORTATION:

Easy access to NYST—  
I-87, Cross Westchester  
Expressway—I-287, Saw Mill  
River & Sprain Parkways,  
Rte 9A and Bus

### NEIGHBORHOOD:

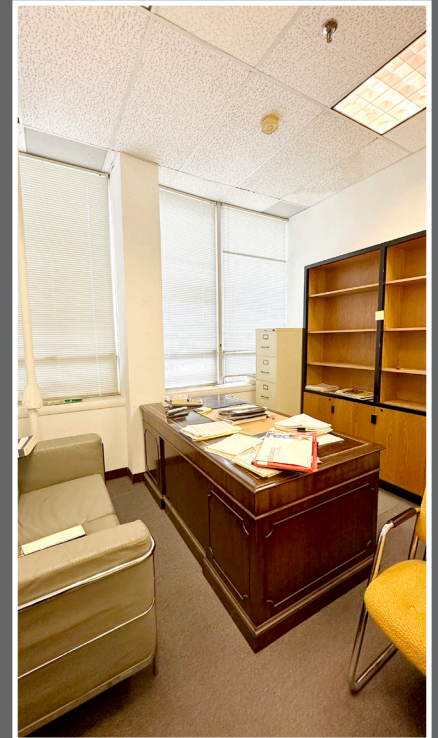
Convenient to hotels,  
restaurants, local shopping  
and services

### CONTACT:

William Anson  
914.968.8500 ext 329

Kevin Langtry  
914.968.8500 ext 322

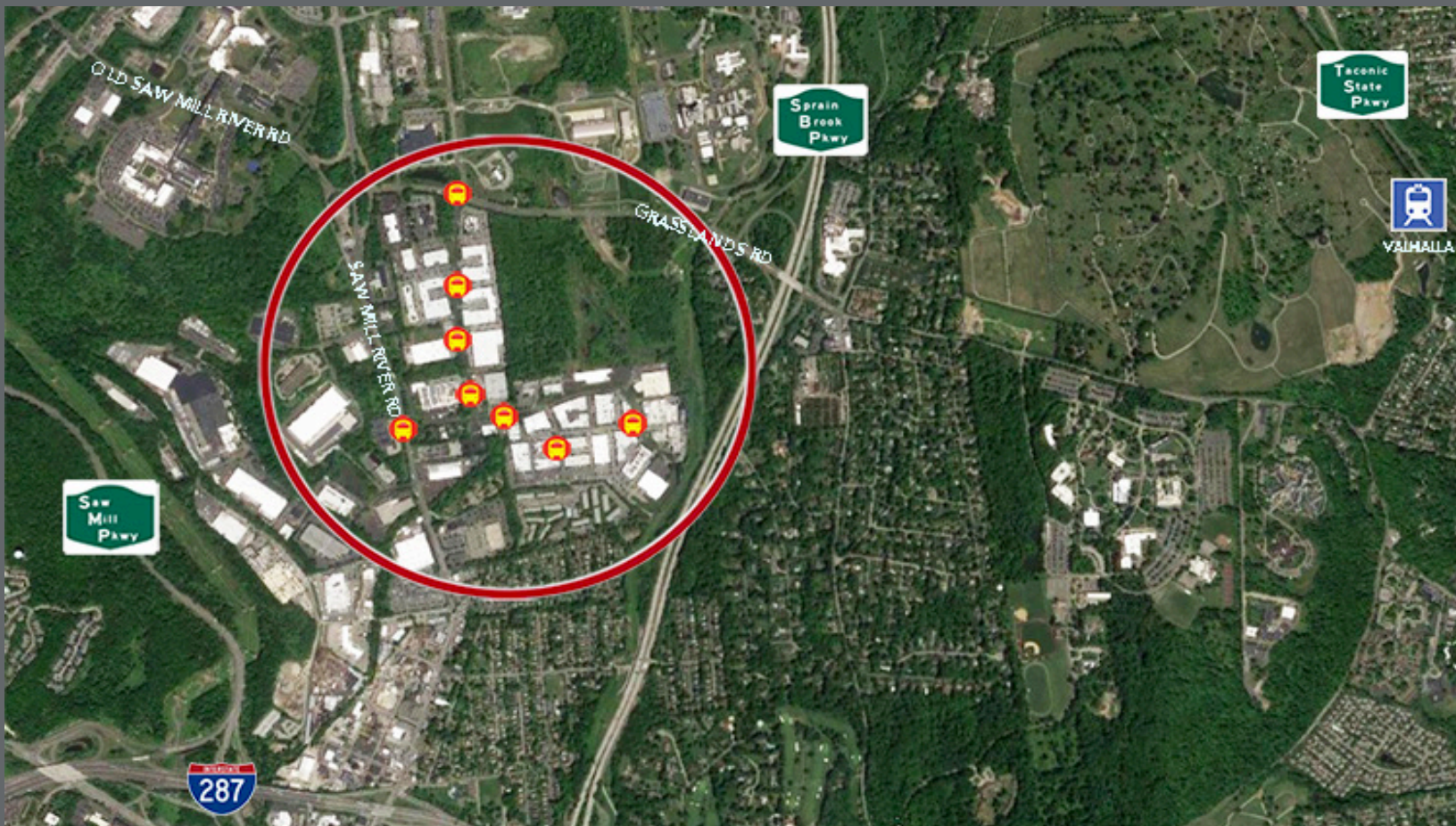
Jillian Reiner  
914.968.8500 ext 343





# CROSS WESTCHESTER EXECUTIVE PARK

## 3 WESTCHESTER PLAZA, ELMSFORD, NY



### CONTACT EXCLUSIVE AGENTS:

**WILLIAM ANSON**  
914.968.8500 X 329  
WANSON@RMFRIEDLAND.COM

**KEVIN LANGTRY**  
914.968.8500 X 322  
KLANGTRY@RMFRIEDLAND.COM

**JILLIAN REINER**  
914.968.8500 X 343  
JREINER@RMFRIEDLAND.COM



440 Mamaroneck Ave | Harrison, NY 10528 | [rmfriedland.com](http://rmfriedland.com) | 914.968.8500

All information contained herein is based upon information which we consider reliable, but because it has been supplied by third parties, we cannot represent that it is accurate or complete, and it should not be relied upon as such. The offerings are subject to errors, omissions, changes, including price, or withdrawal without notice. The content is provided without warranties of any kind, either express or implied. RM Friedland, LLC, its agents or employees shall not be held liable to anyone for any errors, omissions or inaccuracies under any circumstances. You and your advisors should conduct a careful, independent examination of the property to determine to your satisfaction the suitability of the