

**700**  
WHITE PLAINS ROAD  
EASTCHESTER, NY

**VERNON HILLS**  
OFFICE BUILDINGS

**A WORK, SHOP,  
AND PLAY  
LOCATION  
PERFECTLY  
SUITED FOR  
MEDICAL, LAW,  
AND FINANCIAL  
PROFESSIONALS**

**RMF**  
**OFFICE**

NEW YORK | CONNECTICUT  
RMFRIEDLAND.COM

OWNED AND MANAGED BY

**ASHKENAZY**  
ACQUISITION



An aerial photograph of the Vernon Hills Office Buildings, a large complex of several interconnected office buildings with flat roofs and numerous windows. The buildings are surrounded by extensive parking lots filled with cars. To the left, there is a large green sports field, likely a baseball or softball field, with a red infield. The area is lush with green trees and landscaping. In the top right corner, there is a large white '700' logo with the address 'WHITE PLAINS ROAD EASTCHESTER, NY' written below it in a smaller font.

700  
WHITE PLAINS ROAD  
EASTCHESTER, NY

VERNON HILLS  
OFFICE BUILDINGS



# VERNON HILLS OFFICE BUILDINGS

This conveniently located, mixed-use building maximizes the professional office and retail conveniences of on-site shopping, fitness, dining, and more.



**700**  
WHITE PLAINS ROAD  
EASTCHESTER, NY

## VERNON HILLS CENTER OFFERS THE **BEST** OF **BOTH!**





# Join a Prestigious Suburban Professional Services Community.

**700**  
WHITE PLAINS ROAD  
EASTCHESTER, NY

The Vernon Hills Office community experience is unlike any other — offering boutique and major retailers, fitness, beauty and hair care, fine and casual dining — all within steps of your medical office suite!



**VERNON HILLS**  
OFFICE BUILDINGS

All information contained herein is based upon information which we consider reliable, but because it has been supplied by third parties, we cannot represent that it is accurate or complete, and it should not be relied upon as such. The offerings are subject to errors, omissions, changes, including price, or withdrawal without notice. The content is provided without warranties of any kind, either express or implied. RM Friedland, LLC, its agents or employees shall not be held liable to anyone for any errors, omissions or inaccuracies under any circumstances. You and your advisors should conduct a careful, independent examination of the property to determine to your satisfaction the suitability of the property for your needs.

**RMF**  
**OFFICE**  
NEW YORK | CONNECTICUT  
RMFRIEDLAND.COM

# At your fingertips...

As a tenant of 700 White Plains Road, you will find a variety of corporate and retail neighbors that include New York Presbyterian Medical Group, Montefiore Medical Group, Chase Bank, Scarsdale Medical Group, New York Sports Club, Scarsdale Dental Spa & Wellness, Starbucks, Barnes & Noble, and more.

Shorter commute times coupled with responsive property management, 700 White Plains Road sets a new standard of what a medical office can provide in Westchester County.





700 White Plains Road are centrally located between The Hutchinson River Parkway and the Bronx River Parkway and only minutes from I-95.

The closest train station is the Metro-North Scarsdale Train station.



Scarsdale Train Station  
5 min (1.9 mi)

Crestwood Station Plaza  
6 min (1.4 mi)



0040 Bus  
1 min (0.2 mi)



# VERNON HILLS SHOPPING CENTER MAP



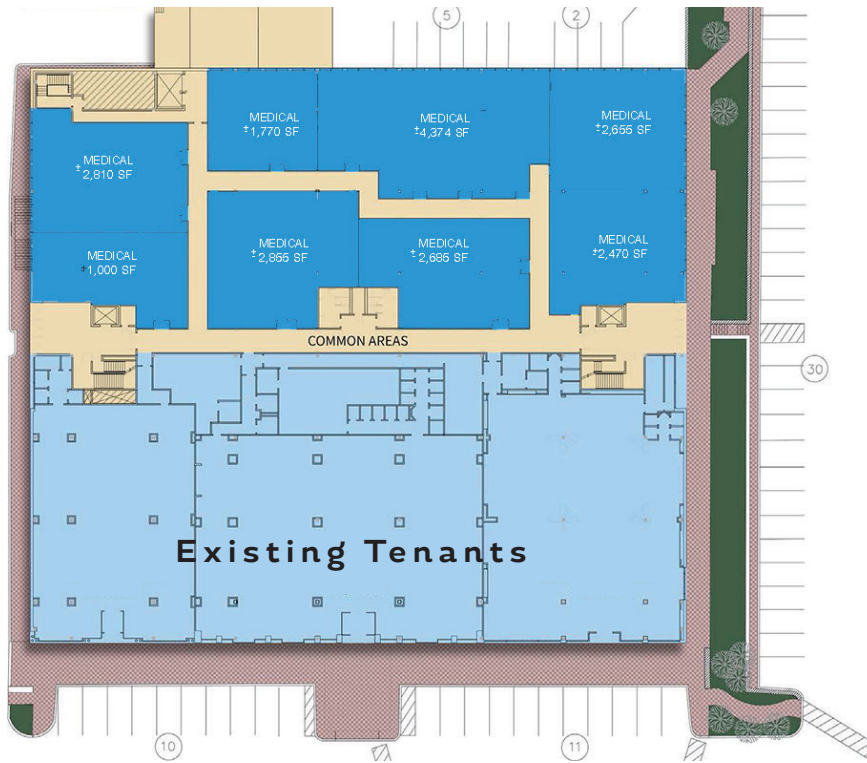




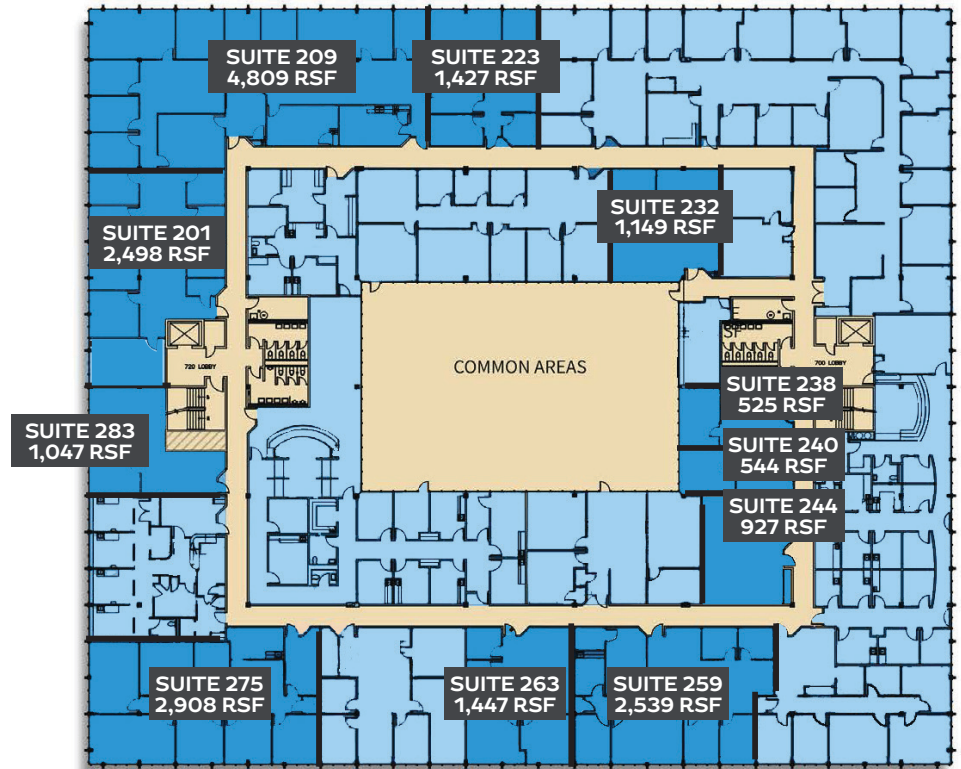
# 700

WHITE PLAINS ROAD  
EASTCHESTER, NY

LEASED VACANT



**Ground Level Office**  
Fully Leased



**Second Level**  
19,820 RSF Vacant

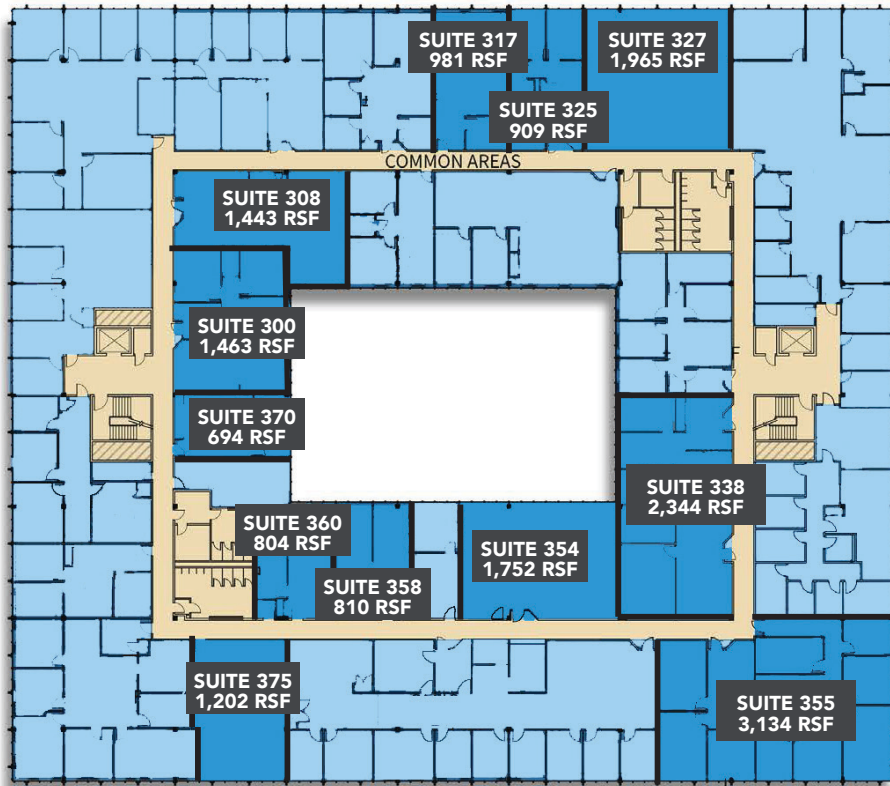




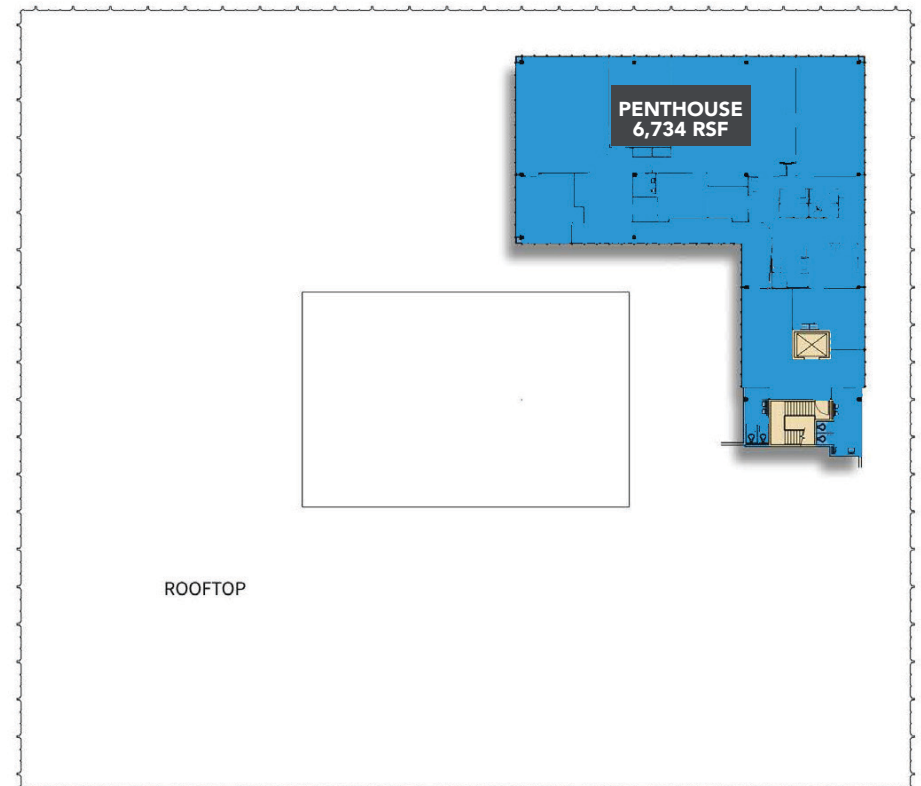
# 700

WHITE PLAINS ROAD  
EASTCHESTER, NY

LEASED VACANT



**Third Floor**  
19,881 RSF Vacant



**Penthouse**  
6,734 RSF Vacant

\*For a requirement of 10,000 SF or larger please contact our leasing team for assistance.





**VERNON HILLS**  
OFFICE BUILDINGS

**700**  
WHITE PLAINS ROAD  
EASTCHESTER, NY

**A PROFESSIONAL COMMUNITY ON THE RISE**

**CONTACT EXCLUSIVE AGENTS:**

CHRIS O'CALLAGHAN  
914.968.8500 x 342

[cocallaghan@rmfriedland.com](mailto:cocallaghan@rmfriedland.com)

DAVID SCOTTO  
914.968.8500 x 306

[dscotto@rmfriedland.com](mailto:dscotto@rmfriedland.com)

JILLIAN REINER  
914.968.8500 x 343

[jreiner@rmfriedland.com](mailto:jreiner@rmfriedland.com)



All information contained herein is based upon information which we consider reliable, but because it has been supplied by third parties, we cannot represent that it is accurate or complete, and it should not be relied upon as such. The offerings are subject to errors, omissions, changes, including price, or withdrawal without notice. The content is provided without warranties of any kind, either express or implied. RM Friedland, LLC, its agents or employees shall not be held liable to anyone for any errors, omissions or inaccuracies under any circumstances. You and your advisors should conduct a careful, independent examination of the property to determine to your satisfaction the suitability of the property for your needs.