



SUPERIOR AMENITIES
IN THE CENTER OF
A MAJOR MEDICAL,
RESEARCH AND
TECHNOLOGY HUB

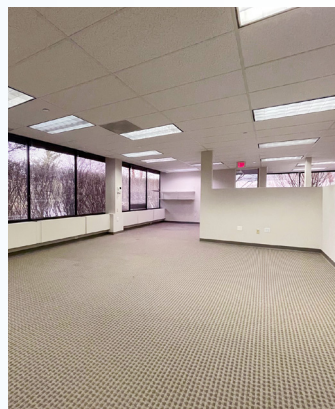
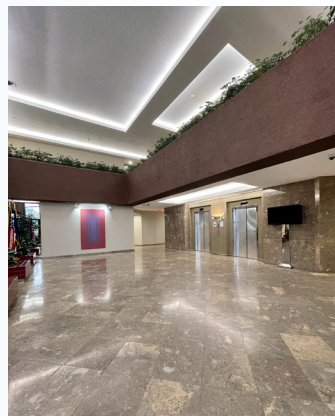


NEWLY RENOVATED
MODERN ELEGANCE IN A CONVENIENT,
SUBURBAN SETTING



7 Skyline stands out as an exceptional quality office building, combining a comfortable level of sustainability and smart-tech solutions.

Offering office floor plans that can be divided based on the unique needs of the tenant—approximately 1,038 RSF on the lower level up to 7,710 RSF on the 1st floor, up to 10,590 RSF on the 2nd floor and 5,460 RSF on the 3rd floor.



Building Size: 113,251 RSF

Availability:

LL	1,038 RSF
1st Fl	7,710 RSF
2nd Fl	2,124 RSF
2nd Fl	10,590 RSF
3rd Fl	1,327 RSF
3rd Fl	4,133 RSF

On-site storage available

Rental Rate:

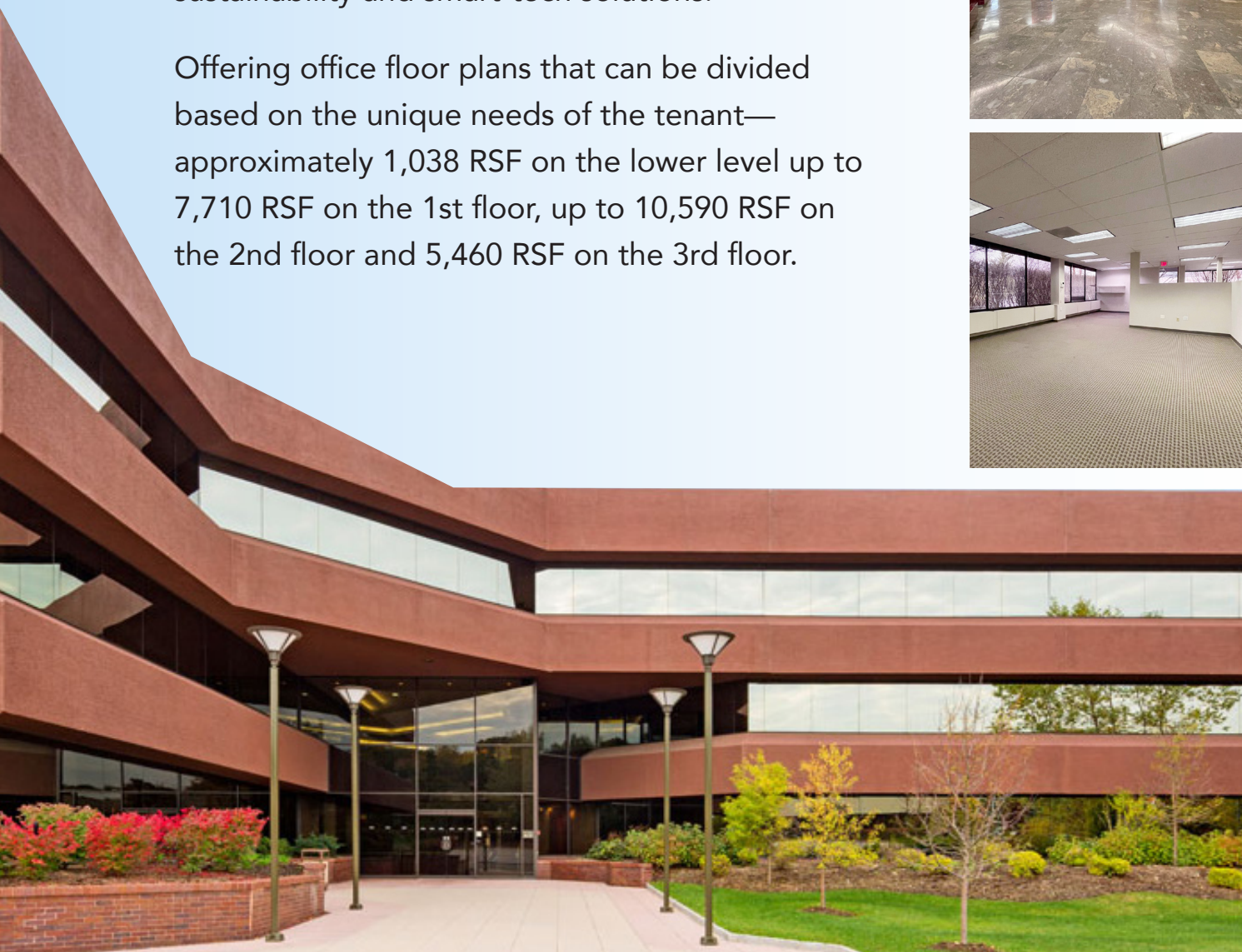
Upon Request

Number of Stories: 3

Parking: 3 per 1000

Building Amenities:

2-story glass atrium lobby, cafeteria, and on-site property management.





LIFESTYLE

Building is convenient to restaurants, banking, hotels, and food delivery services.

ACCESSIBILITY CONVENIENCE

Minutes to Saw Mill River Parkway, Sprain Brook and Taconic Parkways. Bee Line bus stops right in front of the office building.

Ideally located only 45 minutes from midtown Manhattan and only 8 minutes (2.5 mi) to the Mt. Pleasant Metro North Railroad train station.

NEIGHBORS

Join Regeneron, Westchester Medical Center, New York Medical College, Clarapath and other leading businesses in and around the Mid-Westchester Executive Park.

Floor by Floor Availability

3rd Floor	1,327 - 4,133 RSF
2nd Floor	2,124 - 10,590 RSF
1st Floor	7,710 RSF
Lower Level	1,038 RSF



8 SKYLINE
pti
Global Leaders in Package Testing Equipment

MTA Metro-North Railroad

Taconic State Pkwy

12 SKYLINE
CLARAPATH
AUTOMATING PATHOLOGY
Corporate Headquarters; A medical robotics platform reshaping medicine



NEW YORK MEDICAL COLLEGE
A MEMBER OF THE YORKE COLLEGE AND UNIVERSITY SYSTEM
SCHOOL OF HEALTH SCIENCES & PRACTICE - INSTITUTE OF PUBLIC HEALTH

RETIA MEDICAL **sapience therapeutics**

SPHY THERAPEUTICS **Biolnc**

*Biolnc is the only biotechnology Incubator sited on a Health Sciences College Campus in the Mid-Hudson Valley.

Transportation

Sprain Brook Pkwy **Saw Mill Pkwy**

the bee-line system

MTA Metro-North Railroad

CONTACT EXCLUSIVE AGENTS:

CHRIS O'CALLAGHAN
914.968.8500 x 342
cocallaghan@rmfriedland.com

JILLIAN REINER
914.968.8500 x 343
jreiner@rmfriedland.com

All information contained herein is based upon information which we consider reliable, but because it has been supplied by third parties, we cannot represent that it is accurate or complete, and it should not be relied upon as such. The offerings are subject to errors, omissions, changes, including price, or withdrawal without notice. The content is provided without warranties of any kind, either express or implied. RM Friedland, LLC, its agents or employees shall not be held liable to anyone for any errors, omissions or inaccuracies under any circumstances. You and your advisors should conduct a careful, independent examination of the property to determine to your satisfaction the suitability of the property for your needs.